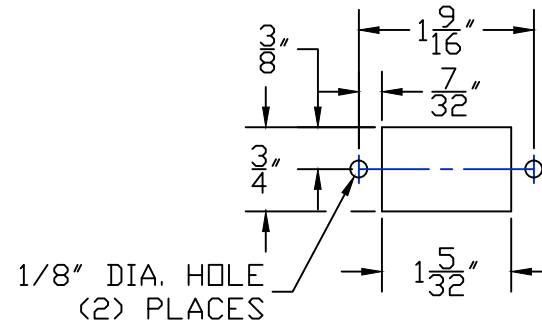


# NOTES

1. HOLES ARE FOR 4 MM RIVETS. DRILL TO FIT.
2. REFER TO ACTUAL PARTS FOR VERIFICATION OF OPENINGS AND PATTERNS AS MANUFACTURING OPENINGS AND PATTERNS MAY CHANGE.

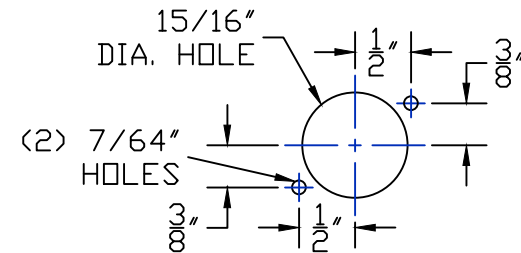
## REVISIONS

REV	DESCRIPTION	DATE	APPROVED
-----	-------------	------	----------



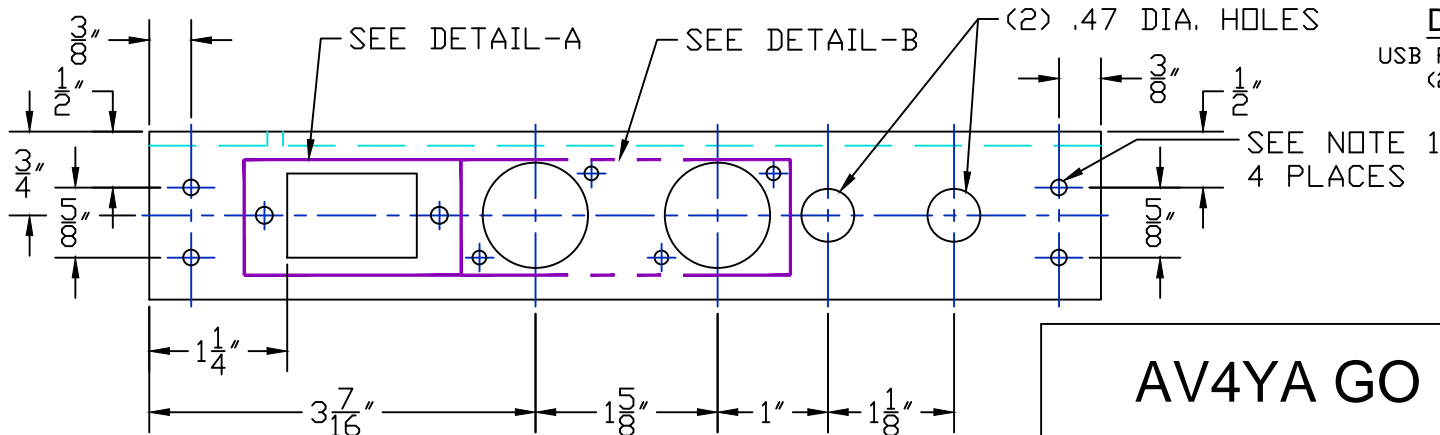
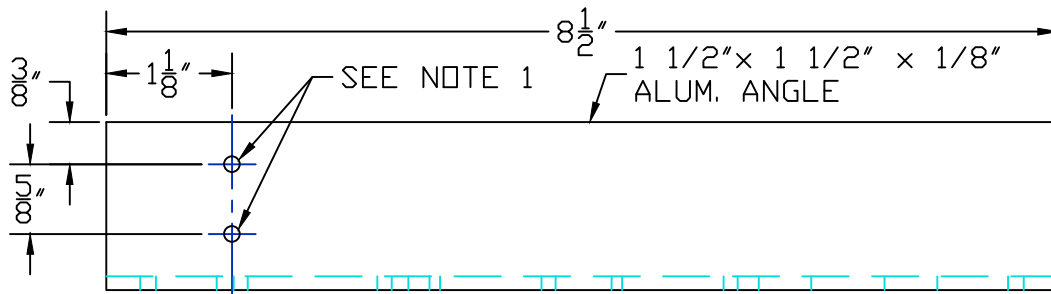
### DETAIL-A

AC POWER INLET PORT PATTERN



### DETAIL-B

USB PORT PATTERN  
(2) PLACES



# AV4YA GO KIT FRAME

SIZE <b>A</b>	DRAWN BY: K SHEVLIN	DWG NO. <b>PART A</b>	REV <b>A</b>
DO NOT SCALE	DATE	Feb 01, 2015	