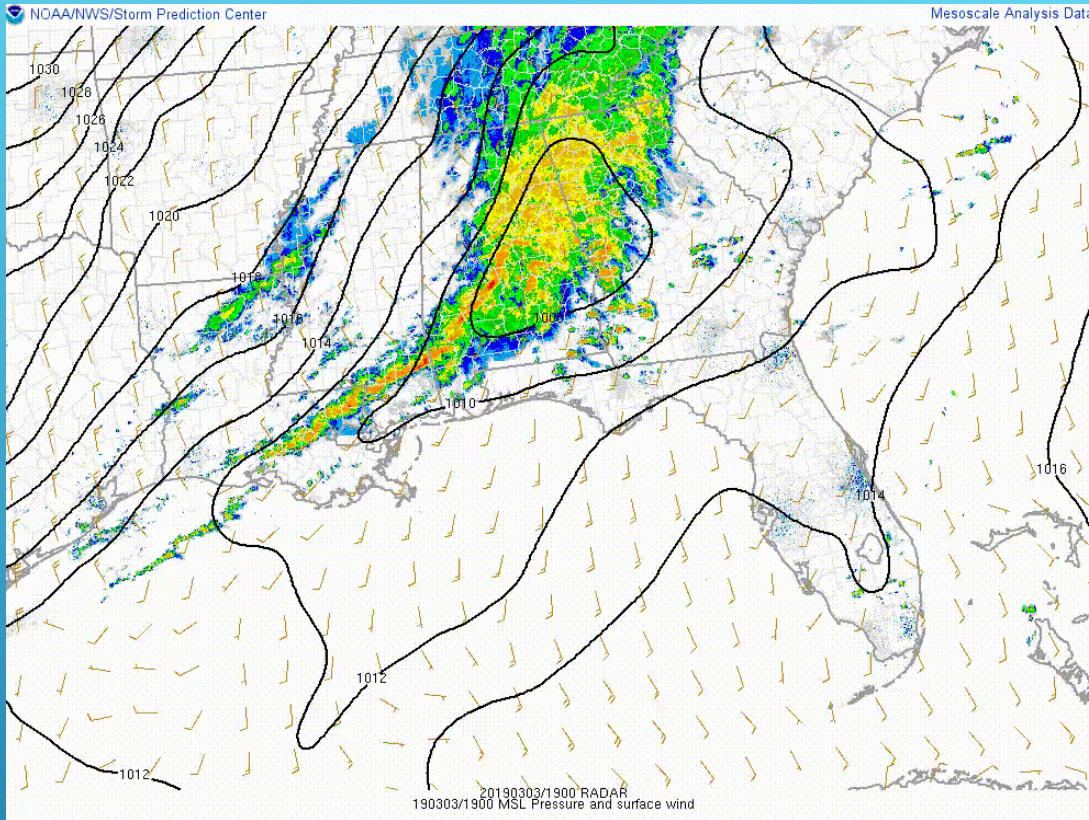


MARCH 3RD TORNADO OUTBREAK

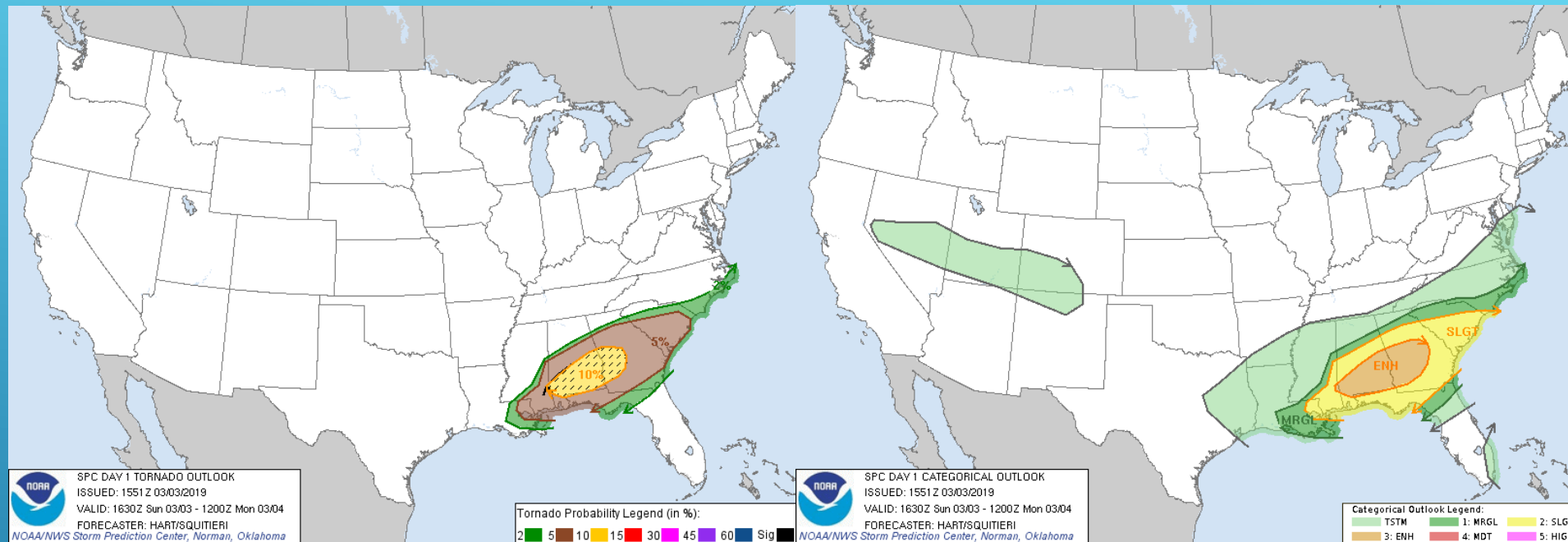
Columbia County

Emergency Management Agency

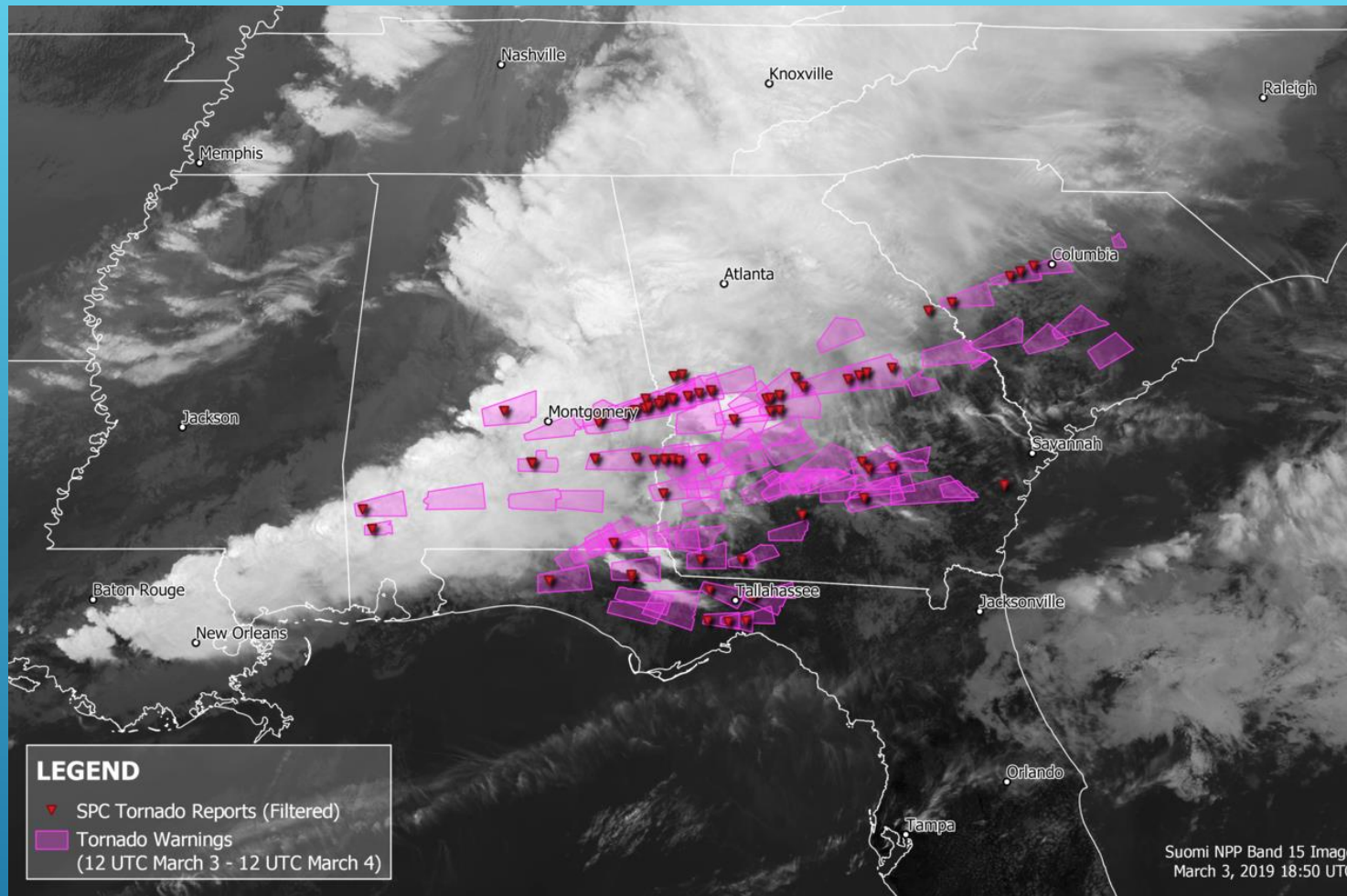




ON SUNDAY, MARCH 3RD, 2019, A STRONG COLD FRONT MOVED THROUGH THE CENTRAL SAVANNAH RIVER AREA OF GEORGIA AND MIDLANDS OF SOUTH CAROLINA DURING THE LATE AFTERNOON AND EVENING. STRONG THUNDERSTORMS DEVELOPED ALONG AND AHEAD OF THE FRONT WHICH ULTIMATELY PRODUCED SIX TORNADOES ACROSS THE AREA: FOUR EF1S AND TWO EF2S.



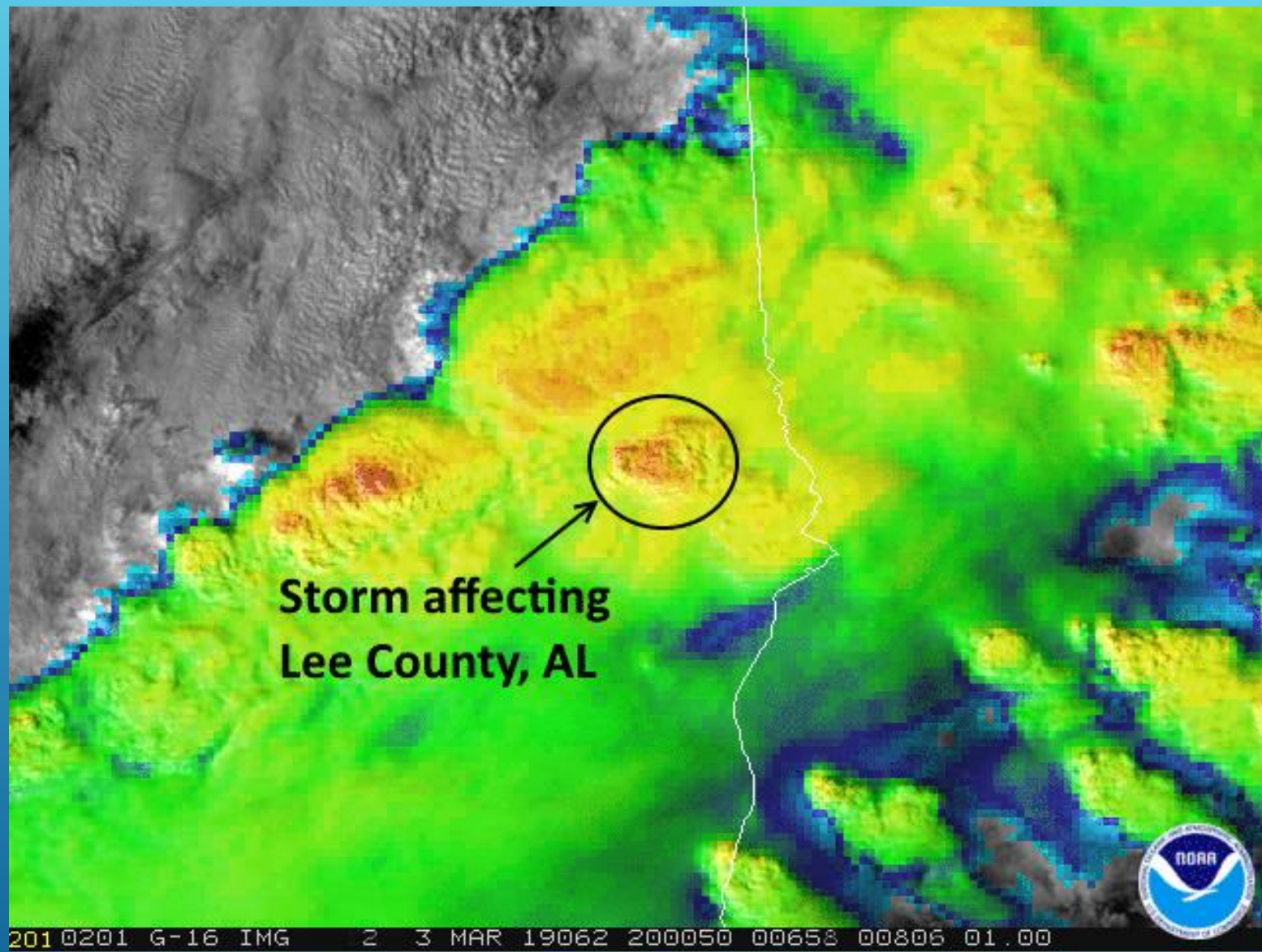
MOST OF CENTRAL SOUTH CAROLINA AND EAST-CENTRAL GEORGIA WERE IN THE SLIGHT RISK CATEGORY FOR SEVERE WEATHER BY THE STORM PREDICTION CENTER. THIS INCLUDED A 5% RISK OF TORNADOES.



OVER THE COURSE OF 6 HOURS, A TOTAL OF 40
TORNADOS TOUCHED DOWN ACROSS PORTIONS OF
ALABAMA, GEORGIA, FLORIDA, AND SOUTH CAROLINA.



THE STRONGEST OF THESE WAS AN EF4 TORNADO THAT DEVASTATED RURAL COMMUNITIES FROM BEAUREGARD, ALABAMA TO TALBOTTON, GEORGIA, KILLING 23 PEOPLE AND INJURING 97 OTHERS. ITS DEATH TOLL REPRESENTED MORE THAN TWICE THE NUMBER OF TORNADO DEATHS IN THE UNITED STATES IN 2018, AND IT WAS THE DEADLIEST SINGLE TORNADO IN THE COUNTRY SINCE THE 2013 MOORE EF5 TORNADO.



EF Rating	Wind Speeds	Expected Damage	
EF-0	65-85 mph	'Minor' damage: shingles blown off or parts of a roof peeled off, damage to gutters/siding, branches broken off trees, shallow rooted trees toppled.	
EF-1	86-110 mph	'Moderate' damage: more significant roof damage, windows broken, exterior doors damaged or lost, mobile homes overturned or badly damaged.	
EF-2	111-135 mph	'Considerable' damage: roofs torn off well constructed homes, homes shifted off their foundation, mobile homes completely destroyed, large trees snapped or uprooted, cars can be tossed.	
EF-3	136-165 mph	'Severe' damage: entire stories of well constructed homes destroyed, significant damage done to large buildings, homes with weak foundations can be blown away, trees begin to lose their bark.	
EF-4	166-200 mph	'Extreme' damage: Well constructed homes are leveled, cars are thrown significant distances, top story exterior walls of masonry buildings would likely collapse.	
EF-5	> 200 mph	'Massive/incredible' damage: Well constructed homes are swept away, steel-reinforced concrete structures are critically damaged, high-rise buildings sustain severe structural damage, trees are usually completely debarked, stripped of branches and snapped.	

ENHANCED FUJITA SCALE



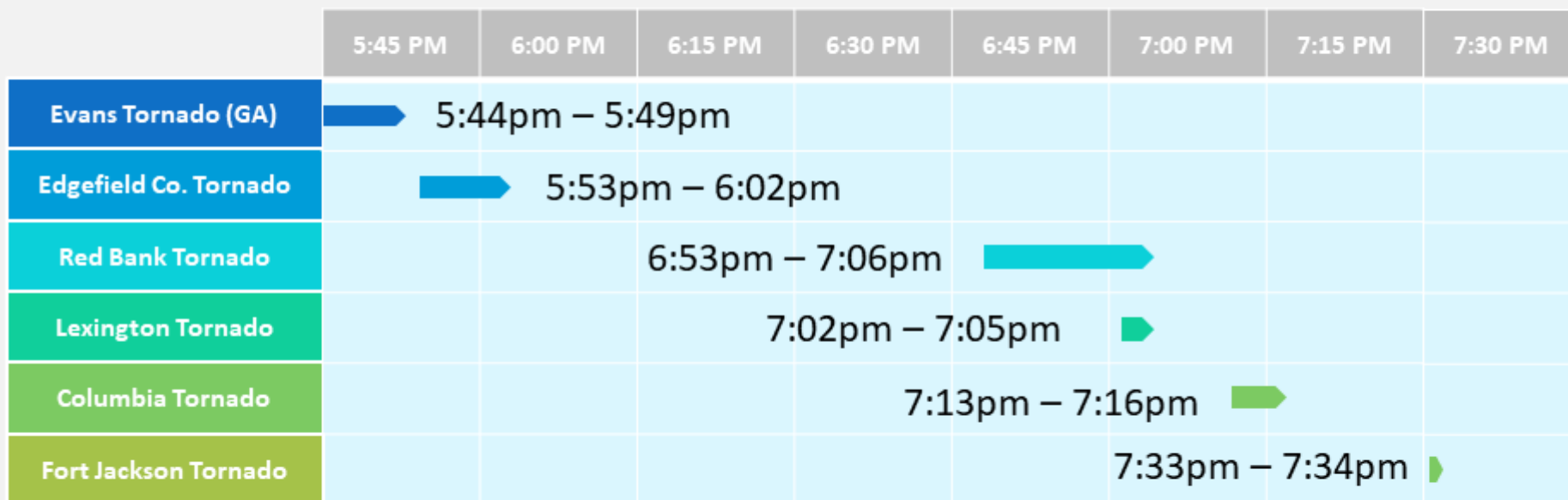
Columbia, SC

*Updated 3/15/19



TIMELINE OF EVENTS

March 3rd 2019 Tornado Outbreak



Evans Tornado (GA)



Edgefield Co. Tornado



Red Bank Tornado



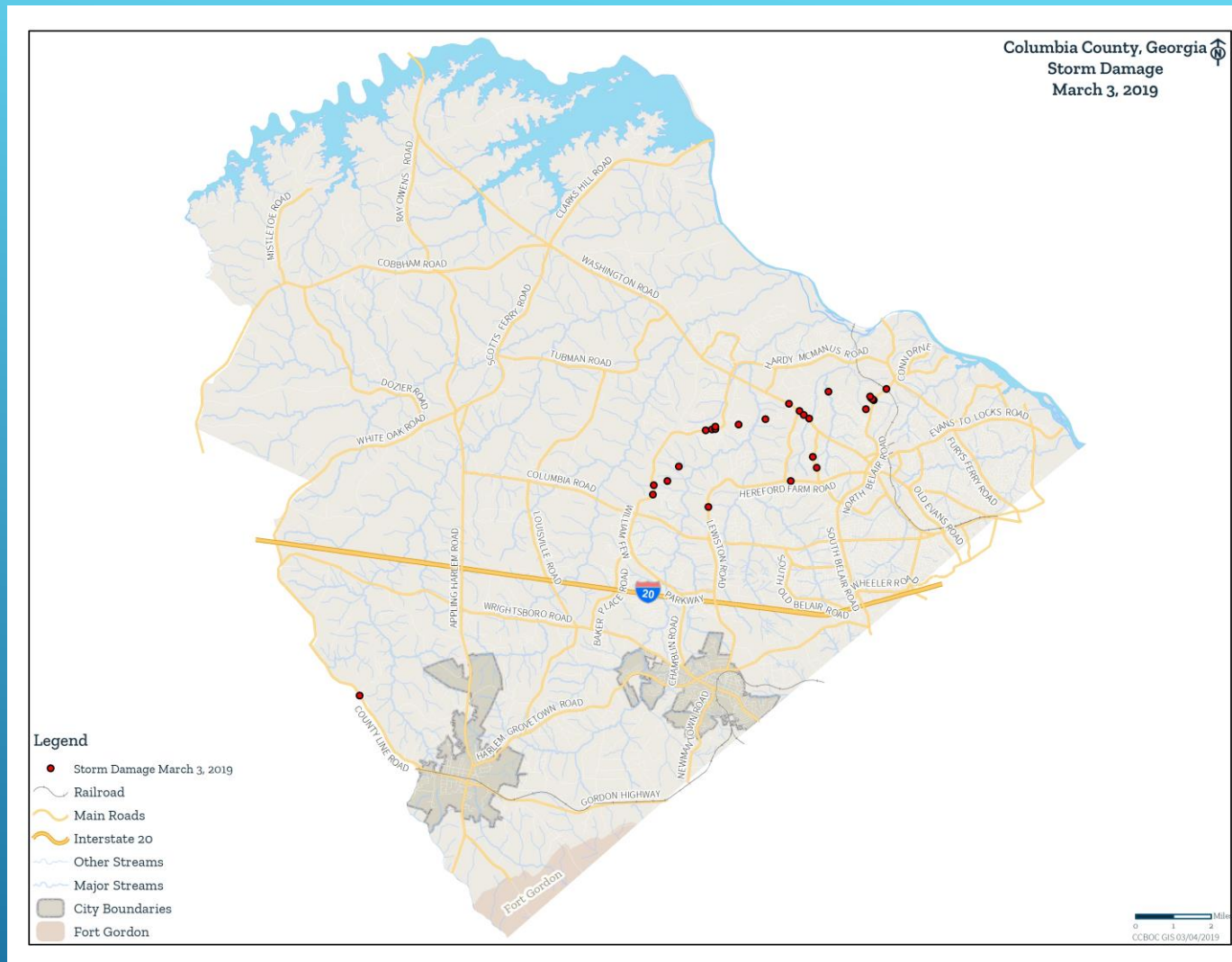
Lexington Tornado



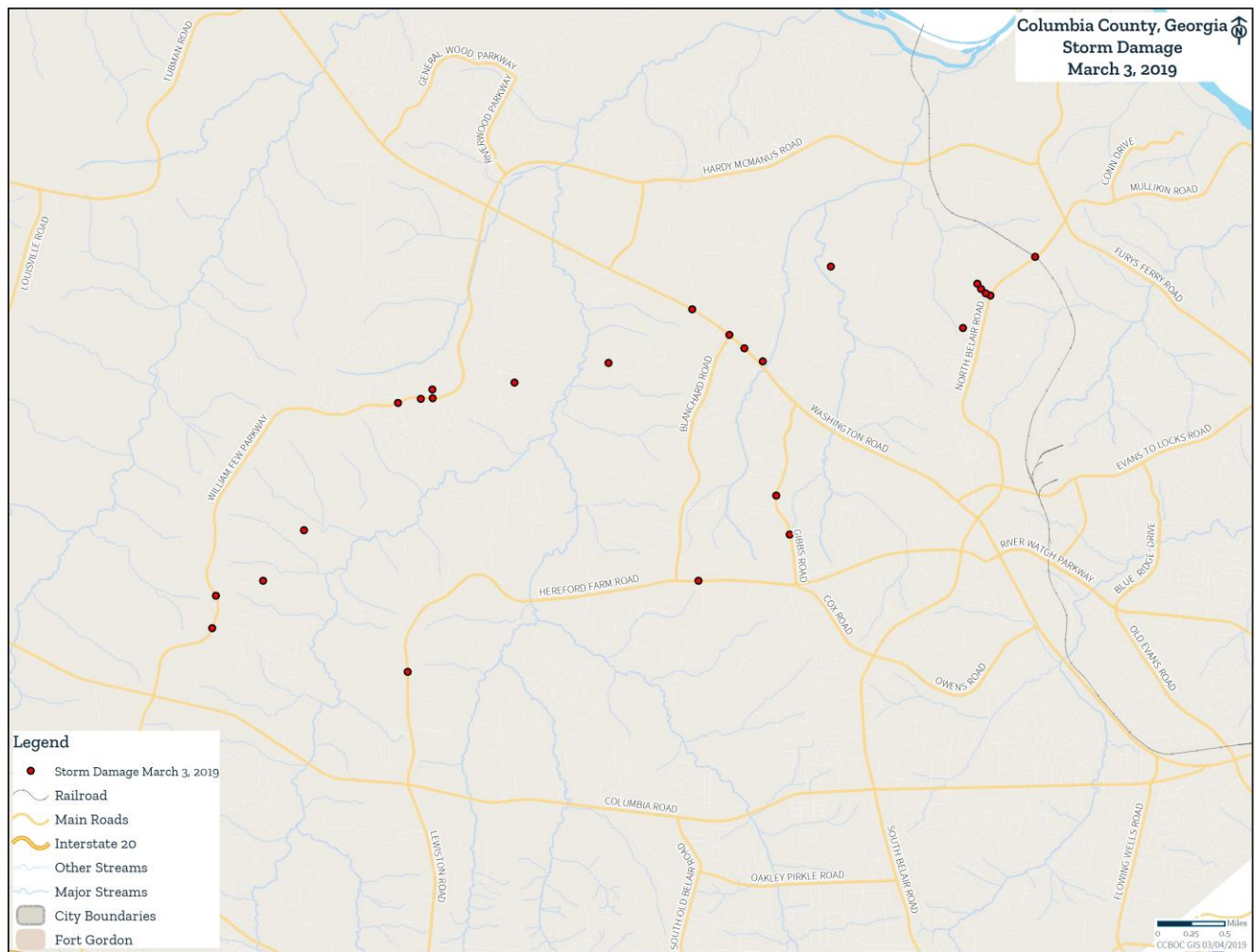
Columbia Tornado



Fort Jackson Tornado



DAMAGE REPORTS IN COLUMBIA COUNTY



911
REPORTED
ZERO
INJURIES IN
COLUMBIA
COUNTY



NATIONAL WEATHER SERVICE
OCEANIC AND ATMOSPHERIC ADMINISTRATION



Preliminary Damage Survey Results

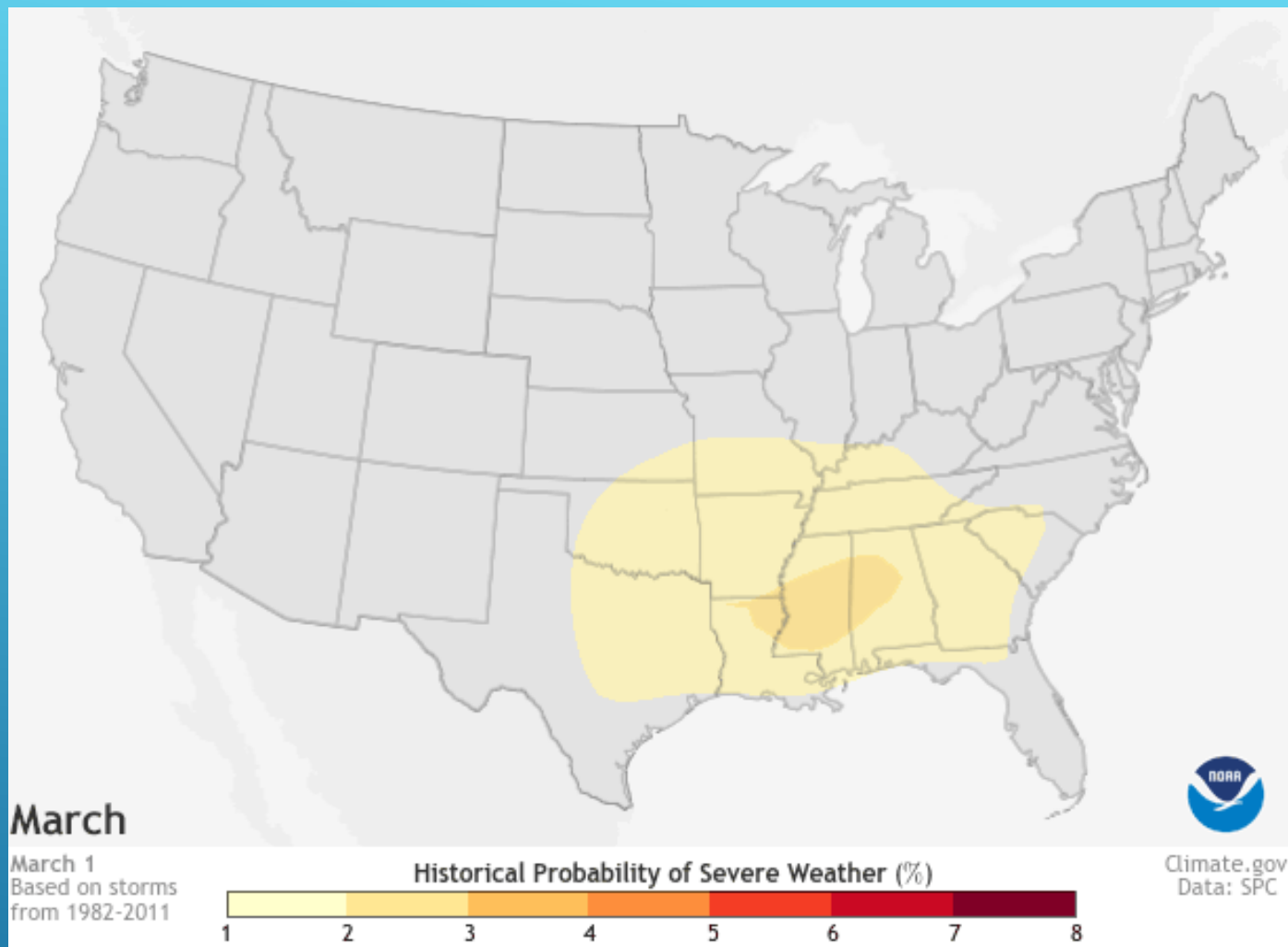
Evans Tornado – Columbia County GA

Date	March 3, 2019
Time (Local)	5:44pm – 5:49pm
EF Rating	EF-2
Est. Peak Winds	120 mph
Path Length	1.52 miles
Max Width	100 yards
Injuries/Deaths	None









POTENTIAL FOR MORE EVENTS
THIS YEAR



SKYWARN
WEATHER.GOV®

WE NEED YOUR REPORTS!!!



Questions